

Congratulations on Earning Your Blue Rewards Incentive

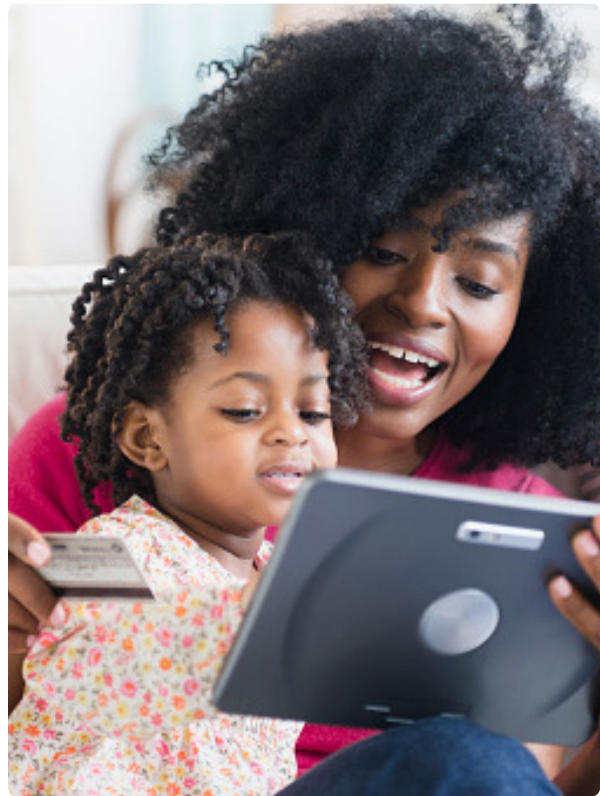
Getting started

CareFirst BlueCross BlueShield (CareFirst) congratulates you on earning your CareFirst Blue Rewards Visa® Incentive Card! As soon as you activate your card, you can begin enjoying the rewards of living a healthy lifestyle.

To complete the quick activation process, call 800-531-6675 and make sure you have your incentive card handy. You will be asked to provide:

- The card number;
- The last four digits of the policyholder’s Social Security number; and
- The three-digit CVV code on the back of your card.

Your card is now ready to use and can help you save on healthcare costs. Use it to pay for out-of-pocket expenses¹ like copays or coinsurance related to services under your CareFirst health plan (medical, dental, vision). When you use your card, your purchase amount will be automatically deducted from your card balance.



Where your card is accepted

You may use your card at approved healthcare merchant locations including:



Doctors’ offices, convenience care and urgent care centers



Vision care centers (eyeglasses, contact lenses)



Pharmacies



Hospitals



Dental offices (dental procedures)



Lab facilities

Should you need assistance, please call the customer service telephone number located on the back of your incentive card.

¹ Refer to your benefits summary to determine your eligible expenses.

If you are enrolled in a health plan with a health savings account (HSA), the health insurance policyholder will need to sign in to their Sharecare account and agree to the HSA Agreement Terms before rewards can be earned. If the policyholder does not agree with the terms, Blue Rewards incentive activities may be completed but no reward will be issued.

Sharecare, Inc. is an independent company that provides health improvement management services to CareFirst members.



Incentive card rules

You have until the end of your benefit period to use your incentive card; funds do not roll over.

The card allows for transactions that are equal to or less than your current card balance.

You cannot use the card to pay for services that aren't covered by your plan. For example, if you do not have dental coverage through CareFirst, you cannot use your incentive card for dental care.

The card cannot be used for over-the-counter medications or products.

Save your receipts for every purchase in the event you are asked to validate the card was used for an eligible expense.

Managing your incentive

It's easy to manage your incentive funds online. Simply log in to your Sharecare account² and select *Achieve*. Next, click *Rewards* then *Blue Rewards Incentive Program*. Under the *Rewards* tab, select *Manage Your Blue Rewards*, which connects you to the incentive card administrator's website.³ From there, you can check your incentive card balance and transaction history, request reimbursement for eligible medical expenses you already paid out-of-pocket and validate an expense to confirm it was a CareFirst-covered item or service.

Getting reimbursed

We know there are plenty of things to worry about. Forgetting to use your incentive card shouldn't be one of them.

If you paid out of your own pocket for an expense related to your health plan, you can be reimbursed in a few steps—as long as the expense was for a covered member on your health plan and was incurred within your current benefit period. Also, you'll need a receipt or other documentation from the purchase.

To submit your reimbursement request, you'll need to provide some information related to the claim you paid, including:

- The name of the family member who received the service;
- The claim amount;
- The date of service;
- The provider or vendor name; and
- The name of who to pay—this is where you'll enter your name to be reimbursed.

Submit documentation that verifies your purchase. Examples of acceptable documentation include:

- A copy of your Explanation of Benefits—also called an EOB;
- An itemized statement from your provider; or
- An itemized pharmacy receipt

To submit your documentation, you can either upload an electronic copy or print and complete a claim form. Follow the directions on the form to submit your documentation.

Lastly, choose whether you want to be reimbursed via check or direct deposit to your incentive card and you will be reimbursed within five to ten business days.

² If you don't already have a Sharecare account, visit carefirst.com/sharecare. Enter your CareFirst *My Account* username and password and complete the one-time registration. If you don't have a CareFirst *My Account*, follow the screen prompts to register, using your CareFirst member ID or alternate ID.

³ Further is an independent company that provides administrative services for CareFirst BlueCross BlueShield consumer directed health care plans and incentive cards. Further does not sell BlueCross or BlueShield products and is solely responsible for the administrative services it provides.

Validating an expense

From time to time, CareFirst may contact you by email, mail or a notification in your incentive account to request documentation confirming your incentive card was used to pay for an eligible expense.

If you've been asked to validate an expense, it doesn't mean your claim has been declined. It simply means you must provide more information to support your purchase.

To access your unsubstantiated claims within your incentive account, navigate to the home page and click *View Unsubstantiated Claims* or *View Account*, then *Activity* or *See All Activity*. Under the *Posted Transactions* section, select the dropdown next to the claim with the exclamation point to view the claim details.

From there, click *Attach Document* and follow the prompts for submitting your documentation.

If the documentation you submit does not validate the expense or documentation is not provided, your claim is considered ineligible and payment is required.

Please note: you have 60 days to validate or repay a claim and avoid interruption with your card. However, if you do not act within this timeframe, your card will be deactivated and any unused funds will be lost.

The amount of the ineligible expense will also be reported to your employer as there may be tax implications.

Your account will reflect your new balance in five to ten business days.

The screenshot shows the CareFirst Blue Rewards account interface. At the top, there is a navigation bar with 'My Accounts', 'Learn', and 'My Profile'. A notification banner states 'You have unsubstantiated claims that require documentation' with a 'View Unsubstantiated Claims' button. Below this, the 'My Accounts' section shows the 'Blue Rewards' account with an available balance of '\$0.00' and a 'View Account' button. A transaction detail view is overlaid, showing a debit card payment of \$40.00 to 'PHARMACY INC' on June 7th, 2019. The transaction is marked as requiring documentation. A table provides a summary of the transaction details, including the total paid, payment type, issue date, payee, claim number, service type, provider, and service date. At the bottom of the transaction view, there are buttons for 'Attach Document', 'Add Note', and 'Payment Details'.

Summary	
Total Paid	\$40.00
Payment Type	Direct Payment
Payment Issue Date	Jun 7th, 2019
Payee	PHARMACY INC
Posted	Jun 7th, 2019
Received	Jun 7th, 2019
Source	Debit Card Transaction
Claim Number	00000000000000000000
Service Type	Debit Card Transaction
Provider	PHARMACY INC
Service Date	Jun 4th, 2019

To learn more, log in to your Sharecare account and select *Settings*, then *Help*.

The CareFirst Blue Rewards Visa Incentive Card is issued by The Bancorp Bank, Member FDIC, pursuant to a license from Visa U.S.A. Inc. Cards may be used only at merchants in the U.S. and District of Columbia wherever Visa debit cards are accepted for eligible expenses. See Cardholder Agreement for details.

CareFirst BlueCross BlueShield is the shared business name of CareFirst of Maryland, Inc. and Group Hospitalization and Medical Services, Inc. which are independent licensees of the Blue Cross and Blue Shield Association. The Blue Cross® and Blue Shield® and the Cross and Shield Symbols are registered service marks of the Blue Cross and Blue Shield Association, an association of independent Blue Cross and Blue Shield Plans.

Notice of Nondiscrimination and Availability of Language Assistance Services

(UPDATED 8/5/19)

CareFirst BlueCross BlueShield, CareFirst BlueChoice, Inc., CareFirst Diversified Benefits and all of their corporate affiliates (CareFirst) comply with applicable federal civil rights laws and do not discriminate on the basis of race, color, national origin, age, disability or sex. CareFirst does not exclude people or treat them differently because of race, color, national origin, age, disability or sex.

CareFirst:

- Provides free aid and services to people with disabilities to communicate effectively with us, such as:
 - Qualified sign language interpreters
 - Written information in other formats (large print, audio, accessible electronic formats, other formats)
- Provides free language services to people whose primary language is not English, such as:
 - Qualified interpreters
 - Information written in other languages

If you need these services, please call 855-258-6518.

If you believe CareFirst has failed to provide these services, or discriminated in another way, on the basis of race, color, national origin, age, disability or sex, you can file a grievance with our CareFirst Civil Rights Coordinator by mail, fax or email. If you need help filing a grievance, our CareFirst Civil Rights Coordinator is available to help you.

To file a grievance regarding a violation of federal civil rights, please contact the Civil Rights Coordinator as indicated below. Please do not send payments, claims issues, or other documentation to this office.

Civil Rights Coordinator, Corporate Office of Civil Rights

Mailing Address	P.O. Box 8894 Baltimore, Maryland 21224
Email Address	civilrightscoordinator@carefirst.com
Telephone Number	410-528-7820
Fax Number	410-505-2011

You can also file a civil rights complaint with the U.S. Department of Health and Human Services, Office for Civil Rights electronically through the Office for Civil Rights Complaint portal, available at <https://ocrportal.hhs.gov/ocr/portal/lobby.jsf> or by mail or phone at:

U.S. Department of Health and Human Services
200 Independence Avenue, SW
Room 509F, HHH Building
Washington, D.C. 20201
800-368-1019, 800-537-7697 (TDD)

Complaint forms are available at <http://www.hhs.gov/ocr/office/file/index.html>.

Foreign Language Assistance

Attention (English): This notice contains information about your insurance coverage. It may contain key dates and you may need to take action by certain deadlines. You have the right to get this information and assistance in your language at no cost. Members should call the phone number on the back of their member identification card. All others may call 855-258-6518 and wait through the dialogue until prompted to push 0. When an agent answers, state the language you need and you will be connected to an interpreter.

አማርኛ (Amharic) ማሳሰቢያ፡- ይህ ማስታወቂያ ስለ መድን ሽፋንዎ መረጃ ይዟል። ከተወሰኑ ቀን-ገደቦች በፊት ሊፈጽሟቸው የሚገቡ ነገሮች ሊኖሩ ስለሚችሉ እነዚህን ወሳኝ ቀናት ሊይዝ ይችላሉ። ይኸን መረጃ የማግኘት እና ያለምንም ክፍያ በቋንቋዎ አገዛ የማግኘት መብት አለዎት። አባል ከሆኑ ከመታወቂያ ካርድዎ በስተጀርባ ላይ ወደተጠቀሰው የስልክ ቁጥር መደወል ይችላሉ። አባል ካልሆኑ ደግሞ ወደ ስልክ ቁጥር 855-258-6518 ደውለው 0ን እንዲጫኑ እስኪነገርዎ ድረስ ንግግሩን መጠበቅ አለብዎ። አንድ ወኪል መልስ ሲሰጥዎ፣ የሚፈልጉትን ቋንቋ ያሳውቁ፣ ከዚያም ከተርጓሚ ጋር ይገናኛሉ።

Èdè Yorùbá (Yoruba) Ìtètíléko: Àkíyèsí yìí ní iwífún nípa isẹ adójútòfò rẹ. Ó le ní àwọn déèti pátó o sì le ní láti gbé ìgbésé ní àwọn ojò gbèdèké kan. O ni ètò láti gba iwífún yìí àti irànlówó ní èdè rẹ lófèé. Àwọn omọ-egbé gbòdò pe nóm̀bà fòdùn tò wà lèyìn káàdì idánimò wòn. Àwọn mírán le pe 855-258-6518 kí o sì dúró nípasè ìjíròrò tí tí a ó fì sọ fún ọ láti tẹ 0. Nígbatí aṣojú kan bá dáhùn, sọ èdè tí o fẹ a ó sì sọ ọ pò mò ògbufò kan.

Tiếng Việt (Vietnamese) Chú ý: Thông báo này chứa thông tin về phạm vi bảo hiểm của quý vị. Thông báo có thể chứa những ngày quan trọng và quý vị cần hành động trước một số thời hạn nhất định. Quý vị có quyền nhận được thông tin này và hỗ trợ bằng ngôn ngữ của quý vị hoàn toàn miễn phí. Các thành viên nên gọi số điện thoại ở mặt sau của thẻ nhận dạng. Tất cả những người khác có thể gọi số 855-258-6518 và chờ hết cuộc đối thoại cho đến khi được nhắc nhấn phím 0. Khi một tổng đài viên trả lời, hãy nêu rõ ngôn ngữ quý vị cần và quý vị sẽ được kết nối với một thông dịch viên.

Tagalog (Tagalog) Atensyon: Ang abisong ito ay naglalaman ng impormasyon tungkol sa nasasaklawan ng iyong insurance. Maaari itong maglaman ng mga pinakamahalagang petsa at maaaring kailangan mong gumawa ng aksyon ayon sa ilang deadline. May karapatan ka na makuha ang impormasyong ito at tulong sa iyong sariling wika nang walang gastos. Dapat tawagan ng mga Miyembro ang numero ng telepono na nasa likuran ng kanilang identification card. Ang lahat ng iba ay maaaring tumawag sa 855-258-6518 at maghintay hanggang sa dulo ng diyalogo hanggang sa diktahan na pindutin ang 0. Kapag sumagot ang ahente, sabihin ang wika na kailangan mo at ikokonekta ka sa isang interpreter.

Español (Spanish) Atención: Este aviso contiene información sobre su cobertura de seguro. Es posible que incluya fechas clave y que usted tenga que realizar alguna acción antes de ciertas fechas límite. Usted tiene derecho a obtener esta información y asistencia en su idioma sin ningún costo. Los asegurados deben llamar al número de teléfono que se encuentra al reverso de su tarjeta de identificación. Todos los demás pueden llamar al 855-258-6518 y esperar la grabación hasta que se les indique que deben presionar 0. Cuando un agente de seguros responda, indique el idioma que necesita y se le comunicará con un intérprete.

Русский (Russian) Внимание! Настоящее уведомление содержит информацию о вашем страховом обеспечении. В нем могут указываться важные даты, и от вас может потребоваться выполнить некоторые действия до определенного срока. Вы имеете право бесплатно получить настоящие сведения и сопутствующую помощь на удобном вам языке. Участникам следует обращаться по номеру телефона, указанному на тыльной стороне идентификационной карты. Все прочие абоненты могут звонить по номеру 855-258-6518 и ожидать, пока в голосовом меню не будет предложено нажать цифру «0». При ответе агента укажите желаемый язык общения, и вас свяжут с переводчиком.

हिन्दी (Hindi) ध्यान दें: इस सूचना में आपकी बीमा कवरेज के बारे में जानकारी दी गई है। हो सकता है कि इसमें मुख्य तिथियों का उल्लेख हो और आपके लिए किसी नियत समय-सीमा के भीतर काम करना ज़रूरी हो। आपको यह जानकारी और संबंधित सहायता अपनी भाषा में निःशुल्क पाने का अधिकार है। सदस्यों को अपने पहचान पत्र के पीछे दिए गए फ़ोन नंबर पर कॉल करना चाहिए। अन्य सभी लोग 855-258-6518 पर कॉल कर सकते हैं और जब तक 0 दबाने के लिए न कहा जाए, तब तक संवाद की प्रतीक्षा करें। जब कोई एजेंट उत्तर दे तो उसे अपनी भाषा बताएँ और आपको व्याख्याकार से कनेक्ट कर दिया जाएगा।

Bàsòò-wùdù (Bassa) Tò Dùù Cáò! Bǎ nìà kè bá nyò bě kè m̄ gbo kpá bó nì fùà-fúá-tiǐn nyεε jè dyí. Bǎ nìà kè bédé wé jéé bě b́é m̄ kè dε wa ḿ m̄ kè nyuεε nyu hwè b́é wé b́éa kè zi. Ǿ m̀ò nì kpé b́é m̄ kè bǎ nìà kè kè gbo-kpá-kpá m̄ ḿεε dyé dé nì bídí-wùdù mú b́é m̄ kè se wídí d̀ò péè. Kpooò nyò b́é m̄ dá fúùn-nòbà nìà dé waa I.D. káàò d́éin nyε. Nyò t̀òò séin m̄ dá nòbà nìà kè: 855-258-6518, kè m̄ m̄ f̀ò tee b́é wa ḱε m̄ gbo ćé b́é m̄ kè nòbà m̀òà 0 ḱε dyi pàd̀àn hwè. Ǿ j̀ú kè nyò d̀ò dyi m̄ g̀ǎ j̀úǐn, po wuqu m̄ ḿ poε dyie, kè nyò d̀ò mu bó nìin b́é Ǿ kè nì wuquò mú zà.

বাংলা (Bengali) লক্ষ্য করুন: এই নোটিশে আপনার বিমা কভারেজ সম্পর্কে তথ্য রয়েছে। এর মধ্যে গুরুত্বপূর্ণ তারিখ থাকতে পারে এবং নির্দিষ্ট তারিখের মধ্যে আপনাকে পদক্ষেপ নিতে হতে পারে। বিনা খরচে নিজের ভাষায় এই তথ্য পাওয়ার এবং সহায়তা পাওয়ার অধিকার আপনার আছে। সদস্যদেরকে তাদের পরিচয়পত্রের পিছনে থাকা নম্বরে কল করতে হবে। অন্যেরা 855-258-6518 নম্বরে কল করে 0 টিপতে না বলা পর্যন্ত অপেক্ষা করতে পারেন। যখন কোনো এজেন্ট উত্তর দেবেন তখন আপনার নিজের ভাষার নাম বলুন এবং আপনাকে দোভাষীর সঙ্গে সংযুক্ত করা হবে।

اردو (Urdu) توجہ: یہ نوٹس آپ کے انشورینس کوریج سے متعلق معلومات پر مشتمل ہے۔ اس میں کلیدی تاریخیں ہو سکتی ہیں اور ممکن ہے کہ آپ کو مخصوص آخری تاریخوں تک کارروائی کرنے کی ضرورت پڑے۔ آپ کے پاس یہ معلومات حاصل کرنے اور بغیر خرچہ کیے اپنی زبان میں مدد حاصل کرنے کا حق ہے۔ ممبران کو اپنے شناختی کارڈ کی پشت پر موجود فون نمبر پر کال کرنی چاہیے۔ سبھی دیگر لوگ 855-258-6518 پر کال کر سکتے ہیں اور 0 دبانے کو کہے جانے تک انتظار کریں۔ ایجنٹ کے جواب دینے پر اپنی مطلوبہ زبان بتائیں اور مترجم سے مربوط ہو جائیں گے۔

فارسی (Farsi) توجه: این اعلامیه حاوی اطلاعاتی درباره پوشش بیمه شما است. ممکن است حاوی تاریخ های مهمی باشد و لازم است تا تاریخ مقرر شده خاصی اقدام کنید. شما از این حق برخوردار هستید تا این اطلاعات و راهنمایی را به صورت رایگان به زبان خودتان دریافت کنید. اعضا باید با شماره درج شده در پشت کارت شناسایی شان تماس بگیرند. سایر افراد می توانند با شماره 855-258-6518 تماس بگیرند و منتظر بمانند تا از آنها خواسته شود عدد 0 را فشار دهند. بعد از پاسخگویی توسط یکی از اپراتورها، زبان مورد نیاز را تنظیم کنید تا به مترجم مربوطه وصل شوید.

اللغة العربية (Arabic) تنبيه: يحتوي هذا الإخطار على معلومات بشأن تغطيتك التأمينية، وقد يحتوي على تواريخ مهمة، وقد تحتاج إلى اتخاذ إجراءات بحلول مواعيد نهائية محددة. يحق لك الحصول على هذه المساعدة والمعلومات بلغتك بدون تحمل أي تكلفة. ينبغي على الأعضاء الاتصال على رقم الهاتف المذكور في ظهر بطاقة تعريف الهوية الخاصة بهم. يمكن للأخريين الاتصال على الرقم 855-258-6518 والانتظار خلال المحادثة حتى يطلب منهم الضغط على رقم 0. عند إجابة أحد الوكلاء، اذكر اللغة التي تحتاج إلى التواصل بها وسيتم توصيلك بأحد المترجمين الفوريين.

中文繁体 (Traditional Chinese) 注意：本聲明包含關於您的保險給付相關資訊。本聲明可能包含重要日期及您在特定期限之前需要採取的行動。您有權利免費獲得這份資訊，以及透過您的母語提供的協助服務。會員請撥打印在身分識別卡背面的電話號碼。其他所有人士可撥打電話 855-258-6518，並等候直到對話提示按下按鍵 0。當接線生回答時，請說出您需要使用的語言，這樣您就能與口譯人員連線。

Igbo (Igbo) Nrubama: Okwa a nwere ozi gbasara mkpuchi nchekwa onwe gi. O nwere ike inwe ubochi ndi di mkpa, i nwere ike ime ihe tupu ufodu ubochi njedebe. I nwere ikike inweta ozi na enyemaka a n'asusu gi na akwughi ugwo o bula. Ndi otu kwesiri ikpo akara ekwentu di n'azu nke kaadi njirimara ha. Ndi ozo niile nwere ike ikpo 855-258-6518 wee chere ububo ahu ruo mgbe amanyere ipi 0. Mgbe onye nnochite anya zara, kwuo asusu i choro, a ga-ejiko gi na onye okowa okwu.

Deutsch (German) Achtung: Diese Mitteilung enthält Informationen über Ihren Versicherungsschutz. Sie kann wichtige Termine beinhalten, und Sie müssen gegebenenfalls innerhalb bestimmter Fristen reagieren. Sie haben das Recht, diese Informationen und weitere Unterstützung kostenlos in Ihrer Sprache zu erhalten. Als Mitglied verwenden Sie bitte die auf der Rückseite Ihrer Karte angegebene Telefonnummer. Alle anderen Personen rufen bitte die Nummer 855-258-6518 an und warten auf die Aufforderung, die Taste 0 zu drücken. Geben Sie dem Mitarbeiter die gewünschte Sprache an, damit er Sie mit einem Dolmetscher verbinden kann.

Français (French) Attention: cet avis contient des informations sur votre couverture d'assurance. Des dates importantes peuvent y figurer et il se peut que vous deviez entreprendre des démarches avant certaines échéances. Vous avez le droit d'obtenir gratuitement ces informations et de l'aide dans votre langue. Les membres doivent appeler le numéro de téléphone figurant à l'arrière de leur carte d'identification. Tous les autres peuvent appeler le 855-258-6518 et, après avoir écouté le message, appuyer sur le 0 lorsqu'ils seront invités à le faire. Lorsqu'un(e) employé(e) répondra, indiquez la langue que vous souhaitez et vous serez mis(e) en relation avec un interprète.

한국어(Korean) 주의: 이 통지서에는 보험 커버리지에 대한 정보가 포함되어 있습니다. 주요 날짜 및 조치를 취해야 하는 특정 기한이 포함될 수 있습니다. 귀하에게는 사용 언어로 해당 정보와 지원을 받을 권리가 있습니다. 회원이신 경우 ID 카드의 뒷면에 있는 전화번호로 연락해 주십시오. 회원이 아닌 경우 855-258-6518 번으로 전화하여 0을 누르라는 메시지가 들릴 때까지 기다리십시오. 연결된 상담원에게 필요한 언어를 말씀하시면 통역 서비스에 연결해 드립니다.

Diné Bizaad (Navajo) Ge': Díí bee íł hane'ígíí bii' dahóló bee éédahózin béeso ách'ááh naanil ník'ist'í'ígíí bá. Bii' dahólóq doo íiyisíí yoolkáálígíí dóo t'áadoo le'é ádadoolyíí'ígíí da yókeedgo t'áa doo bee e'e'aaahí ájiil'ííh. Bee ná ahóót'í' díí bee íł hane' dóo níká'ádoowoł t'áa nínizaad bee t'áa jiik'é. Atah danilínígíí béesh bee hane'é bee wólta'ígíí nitł'izgo bee nee hódolzinígíí bikéédéé' bikáá' bich'í' hodoonihjí'. Aadóo náánałta' éí kójjí' dahóoolnih 855-258-6518 dóo yii diiłts'ííł yałtí'ígíí t'áa níléjį́ áádóo éí bikéé'dóo naasbaąs bił adidiilchil. Áká'ánidaalwó'ígíí neidiitáągo, saad bee yániłt'í'ígíí yii diikił dóo ata' halne'é lá níká'ádoowoł.